



# PARENT TOWN HALL MEETING

July 9, 2020



# A SUMMER BREAK LIKE NONE OTHER...

*"ALTHOUGH THE ROAD IS  
NEVER ENDING, TAKE A STEP  
AND KEEP WALKING, DO NOT  
LOOK FEARFULLY INTO THE  
DISTANCE..."*

*Rumi*





# TODAY'S PLAN

- PANDEMIC TASK FORCE REVIEW
  - HOW WE DECIDE
  - OUR PROGRAM PLATFORMS
- OUR FOR NOW, NOT FOREVER PROPOSED START PLATFORM
  - THE BLENDED ACADEMIC SCHEDULE
  - THE OPT-OUT DECISION
  - AFTER SCHOOL LIFE
- HOW WE WILL COME TOGETHER AGAIN
  - ASSESSING VALUE
- YOUR QUESTIONS AND FINAL THOUGHTS



# PANDEMIC TASK FORCE ACTION TEAMS

## Academic Calendar

- Evaluate 2020-21 Hybrid model options
- Establish 20-21 Pathway
- Set trigger points to adjust
- Monitor conditions
- Implement adjustments

## Academic Program *Learning from a Distance*

- March – May LFD autopsy
- Prioritize LFD adjustments & adaptations
- Set summer training protocols for LFD and Hybrid
- Implement enhancements & support for distance models
- Staffing and program needs for hybrid model

## Financial Stewardship

- Evaluate financial models against enrollment and economic conditions
- Prioritize expense levers based on true-up enrollment status
- Monitor and adjust operating budget per Pandemic conditions
- Steward school resources (endowment, aid, cap projects)
- Evaluate FY22 pricing & expense models

## Operations

Evaluate conditions, align operating protocols for campus models:

- Pre-screening thresholds
- Distancing strategies
- Cleaning Practices
- PPE
- Human Resource policy
- Crisis Communication

## Community Support & Engagement *Belonging from a Distance*

- March – May BFD autopsy
- Prioritize BFD adjustments & adaptations
- Implement system changes
- Establish BFD programming for Hybrid model
- Evaluate & reframe 20-21 Philanthropic Priorities (Parish Fund, Senior Gift, Gala)
- Steward Donors & *Limitless* pledges
- Implement crisis communication plan



# WHAT WE ARE SHARING TODAY...

July 2020						
S	M	T	W	T	F	S
			1	2	3	4
5	6	7	8	9	10	11
12	13	14	15	16	17	18
19	20	21	22	23	24	25
26	27	28	29	30	31	

Thursday, Jul 9th 2020

- Thoughts on time – 49 days
- **Decisions of the moment: Agility**
  - Be Safe, Enjoy Learning
  - Planning continues...
- Admin team members in chat





## SWEEP CHAT BOX



# How We Decide

## OUR DECISION MAKING PROCESS

FACING THE REALITIES OF COVID-19



PARISH LEADERSHIP TEAM

### SOURCES OF DATA & RECOMMENDATION

GLOBAL:  
• WHO

NATIONAL:  
• CDC

STATE:  
• Texas  
Education  
Agency

LOCAL:  
• Dallas County  
• County Judge  
• Department of Health  
& Human Services

### SOURCES OF RESOURCE & ALIGNMENT

PEER SCHOOLS:  
• 15 Dallas ISAS Schools  
• National & International  
Schools and Associations

LOCAL ISD  
LEADERS

### INSTITUTIONAL VALUES

- HEALTH AND SAFETY
- SERVICE TO FAMILIES
- INNOVATION
- AGILITY

\*ONLY GOVERNOR CAN ORDER SCHOOL CLOSURE



# Our Program Platforms

- Task Force Charge:

- A). ready the first;
- B). enhance the second;
- C). develop the third

## *Parish - Traditional*

- Five days a week; nine months of year
- 8:00 AM – 3:30 PM
- Before and after-school programming
- 1140 students; 230 + employees; visitors
- Robust calendar of events

## *Parish – Blended*

- Campus presence for modified number of students and employees
- Blend of face-to-face and distance learning experiences
- Virtualized and adjusted calendar of events

## *Parish - from a Distance*

- No campus presence for students or employees
- Learning from a Distance = Academics
- Belonging from a Distance = Culture and community
- Virtualized and adjusted calendar of events

- Fluid Pivots

- "The present, not for the certain or forever plan"



# Our for Now, Not Forever Start Plan...

## *Parish – Blended*

- Campus presence for modified number of students and employees
- Blend of face-to-face and distance learning experiences
- Virtualized and adjusted calendar of events

**Present plan, not for certain  
or forever ( 7 weeks...)**

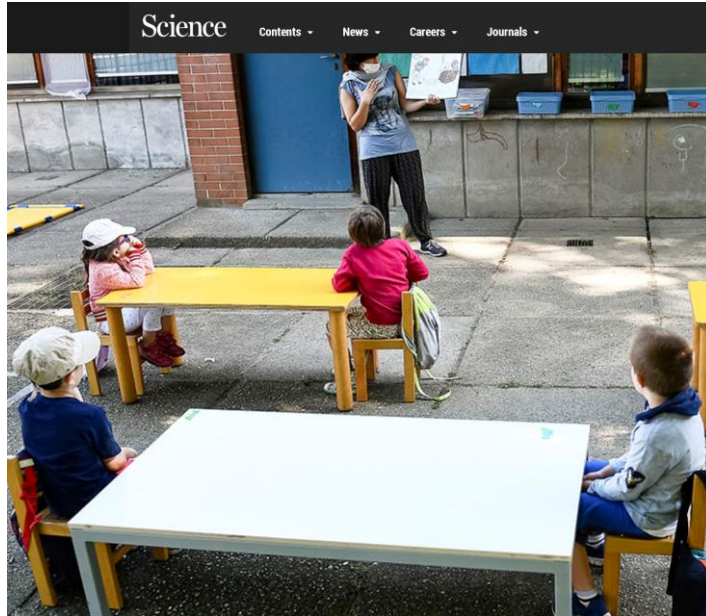
**Off ramp opportunities  
throughout the year...**



- Open school August 27 (grades 3-4 & Upper School); Prek-2<sup>nd</sup> & Middle School on Monday, August 31;
- Lower School (Prek-4<sup>th</sup> grade) on campuses every day;
- Middle and Upper School alternate one week on campus and one week of distance instruction;
- Evaluate operations and ongoing COVID data trends to October break; re-evaluate platform.



# We can do school safely...



In Turin, Italy, a teacher reads to students in a makeshift outdoor classroom. NICOLÒ CAMPO/LIGHTROCKET VIA GETTY IMAGES

**SHARE** School openings across globe suggest ways to keep coronavirus at bay, despite outbreaks



3K



By Jennifer Couzin-Frankel, Gretchen Vogel, Meagan Weiland | Jul. 7, 2020, 4:00 PM

Science's COVID-19 reporting is supported by the Pulitzer Center.

When *Science* looked at reopening strategies from South Africa to Finland to Israel, some encouraging patterns emerged. Together, they suggest a combination of keeping student groups small and requiring masks and some social distancing helps keep schools and communities safe, and that younger children rarely spread the virus to one another or bring it home.

**Does closing schools slow the spread of coronavirus? Past outbreaks provide clues**



[See all of our coverage of the coronavirus outbreak](#)

As spring wore on, many other countries began rethinking distancing in schools. The Canadian province of Quebec, which reopened many elementary schools in May with strict distancing, has announced fall plans that allow children to socialize freely in groups of six; each group must stay 1 meter away from other groups of students and 2 meters away from teachers. Although French preschoolers were photographed sitting inside their own recess squares in May, day cares there have now abandoned all distancing rules for children ages 5 and under. Older students are advised to stay at least 1 meter away from others while inside. But outside they can play freely with others in their class. The Netherlands recently announced that anyone under age 17 does not need to distance.

## Start with caution...learn...evolve practices



## HOW THE BLENDED ACADEMIC SCHEDULE WILL WORK (GRADES 5TH – 12TH)

- Daily, A/B & Faculty/Student Schedules
  - Decisions based on:
    - Parent, student and faculty surveys
    - Cross-divisional faculty
    - Balancing A/B days
    - Reducing occupancy on Midway Campus
      - On and Off campus for MS & US
      - Non-divisional staff on campus with MS



# MS & US DAILY SCHEDULE

- Enhancements to LFD Platform:
  - Daily office hours added
  - More frequent advisory time
  - Addition of flex time in US
- To be determined:
  - Eucharist schedule
  - Traffic flow may have to adjust a minute or two per class.
  - Lunch/advisory/flex in US may be adjusted once the plan for lunch has been finalized.



US On Campus		Time
--------------	--	------

8:00- 9:35	A1 10 min buffer	95
9:40-10:00	Chapel	20
10:10- 11:35	A2	85
11:35-12:15	Advisory MWF & T TH Flex	40
12:15-12:45	Lunch	30
12:50-2:15	A3	85
2:20-3:45	A4	85

MS LFD		Time
--------	--	------

8:30-9:35	A1	65
8:30-9:00	A1a	30
9:05-9:35	A1b	30
9:40-10:05	Advisory	25
10:10-11:15	A3	65
10:10-10:40	A3a	30
10:45-11:15	A3b	30
11:15-12:15	Lunch	60
12:15-1:20	A7	65
12:15-12:45	A7a	30
12:50-1:20	A7b	30
1:20-1:55	Break	35
1:55-3:00	A8	65
1:55-2:25	A8a	30
2:30-3:00	A8b	30
3:05-3:45	Office Hours	



MS On Campus		Time
8:00- 9:35	A1 10 min buffer	95
8:00-8:50	A1a	40
8:55- 9:35	A1b	40
9:40-10:05	Advisory	25
10:10-11:35	A3	85
10:10-10:50	A3a	40
10:55-11:35	A3b	40
11:40-12:00	Chapel	20
12:00-12:40	Lunch/Recess	40
12:45- 2:10	A7	85
12:45-1:25	A7a	40
1:30-2:10	A7b	40
2:15-3:40	A8	85
2:15-2:55	A8a	40
3:00-3:40	A8b	40

US LFD		Time
8:30-9:35	A1	65
9:40-10:05	MWF Flex T TH Advisory	25
10:10-11:15	A2	65
11:15-12:15	Lunch	60
12:15-1:20	A3	65
1:25-1:50	Office Hours/Break	25
1:55-3:00	A4	65
3:05-3:45	Office Hours	40



# MS & US A/B SCHEDULE

- Reduce occupancy
  - MS on campus, US LFD and then rotate
- Balance & keep consistent A/B days
  - Flip flop an on and off week at winter break and at Easter
- All divisional events have been adjusted for either virtual or in person meetings depending on size of event or if division is present on campus.



# HYBRID MODEL

September	1	2	3	4	7	8	9	10	11
LS	ON	ON	ON	ON	H	ON	ON	ON	ON
MS	ON	ON	ON	ON	H	LFD	LFD	LFD	LFD
US	LFD	LFD	LFD	LFD	H	ON	ON	ON	ON

September	14	15	16	17	18	21	22	23	24
LS	ON	ON	ON	ON	ON	ON	ON	ON	ON
MS	ON	ON	ON	ON	ON	LFD	LFD	LFD	LFD
US	LFD	LFD	LFD	LFD	LFD	ON	ON	ON	ON



<b>MS</b>	<b>TRI 1</b>	<b>TRI 2</b>	<b>TRI 3</b>	
<b>A Campus</b>	14	14	15	
<b>B Campus</b>	14	13	14	
<b>Total Campus</b>	28	27	29	84
<b>A Distance</b>	12	14	13	
<b>B Distance</b>	12	14	15	
<b>Total Distance</b>	24	28	28	80
<b>US</b>				
<b>A Campus</b>	13	14	13	
<b>B Campus</b>	13	14	15	
<b>Total Campus</b>	26	28	28	82
<b>A Distance</b>	14	14	13	
<b>B Distance</b>	14	13	12	
<b>Total Distance</b>	28	27	25	80



# FACULTY/STUDENT SCHEDULES

- Lower School
  - Lower School Administration to build LS schedule
- Middle and Upper School
  - 2 versions:
    - Traditional model- normal room assignments
    - Hybrid model- sharing rooms (2nd, 3rd, 4th floor being utilized by MS & US)



# First Days of School- Hybrid Model

## Thurs & Fri August 27-28

- **On Campus**
  - 3rd-4th
  - Upper School
- **PreK-2nd Orientation**
- **MS Advisory Check-in**

## Monday August 31

- **On Campus**
  - All Lower School
  - Middle School
- **LFD**
  - Upper School



# STUDENT ORIENTATIONS- SAVE THE DATE

CHECK WELCOME BACK PACKET & DIVISION HEAD LETTER FOR DETAILS

Tuesday August  
25, 2020

- 3rd-4th Grades
- 8th Grade
- Upper School

Wednesday  
August 26, 2020

- PreK-2nd Grades
- 3rd-4th Grades
- 5th- 7th Grades

Thursday  
August 27, 2020

- PreK-2nd Grades

Friday August  
28, 2020

- PreK-2nd Grades



# LUNCH & CHAPEL

- **Lunch**

- Both campuses will have lunch stations set up around campus.
  - MS & US will have 1 grade level in the lunchroom per day.

- **Chapel**

- Phase I
  - PreK- 12th grade will have chapel in their classrooms or advisories to begin the school year.
- Phase II
  - Midway Campus would allow 1 grade level socially distanced in chapel and streamed to other grade levels in their classrooms or advisories



# The Fourth Platform: The Opt Out

## **Lower School:**

- Students will be assigned a Learning from a Distance teacher.
- Students will participate in synchronous and asynchronous learning.
- Students will complete Parish's standard curriculum.
- Students will be assessed by their Learning from a Distance teacher.

## **Middle & Upper Schools:**

- Students are scheduled in regular Parish classes with Parish faculty.
- Students will complete Parish's standard curriculum in each scheduled course.
- Students attend and participate in synchronous class meetings (while classmates may be LFD or on campus).
- Students complete assignments and assessments in accordance with Parish honor code and are assessed by their Parish teachers.
- Students communicate with their teachers when needing additional guidance, one-on-one help, etc.

**What We Ask: Contact Division Head by Friday, July 24**



# After School Life

- We envision MS and US students coming to campus after school during Learning from a Distance weeks for extracurriculars (e.g. play practices; sports) to degree they are offered;

- Athletics

- \* League (TAPPS) determined – no decision yet

- \* Hopeful but realistic as to challenges

- Arts

- \* Evaluating adjustments to ensembles and performances to promote distancing but creatively preserve opportunities to perform



# Keeping ParishEXTEND Safe

We intend to offer ParishEXTEND Explorations and Extended Care programming in 2020-2021.  
The specific format and schedule will be made available once divisional schedules and procedures are finalized.

## Safety Protocols



ParishEXTEND staff and vendors will be **screened each day** before entering the campus.



In addition to the use of **handsanitizer**, students and staff will practice regular **hand washing**.



All staff and students will be required to **wear a mask**.



We will continue to practice **social distancing**.



Staff will follow **enhanced cleaning procedures** recommended by the CDC throughout the after-school hours.



Weather permitting, ParishEXTEND plans to utilize the **new outdoor structure** as much as possible.

## Cohorts



After school programming will be operated with students in their **same cohort groups** and **spaces**.

Students who participate in Explorations will **remain in their cohort groups**.

## Supplies



During Extended Care and Explorations, students will be assigned their **own supplies** including **art supplies** and **technology**.

Certain Explorations will **adapt their curriculum** so that students can use their **own technology** without using a shared computer lab space.

## Music Lessons



Private music lessons will still be offered both **in person and remotely**. Measures will be put in place to protect both the student and teacher during in-person lessons.

## Remote options



**Limited remote options** may be offered for those who choose to go home after school or those who attend from a distance all day.

## Pick Up

**Limited contact pick up** will be available after Extended Care and/or Explorations.



[WWW.PARISH.ORG/EXTEND](http://WWW.PARISH.ORG/EXTEND)

ParishEXTEND



# Changes to Shopping at PAWS



## Safety Protocols



Customers and staff will be **screened each day** before entering the campus.



Everyone will wear **masks**. Employees will also wear **gloves**, use **sanitizer** and a **protective barrier** has been installed at checkout.



We will continue to practice **social distancing**.



Staff will follow **enhanced cleaning procedures** recommended by the CDC.



We are **limiting merchandise contact**. Any merchandise that has been handled by a customer but not purchased will be set aside for **four days**.



Please use a **credit/debit card or an account** to purchase in order to **limit further contact** whenever possible.

## How To Shop

### Summer



#### Online + Shipping

Shop at home, and we'll ship your order to you.



#### PAWS Summer Sale

July 20-31 - 15% Off Eligible Items

#### Texas Sales Tax Holiday

August 7-8

#### Uniform Resale

TBA



#### Online + Curbside

Place your order online, and we'll notify you when and how to pickup with limited contact.



#### In-Store Shopping

In-store shopping is available by appointment only. Please go to [parish.org/paws](http://parish.org/paws) to make an appointment. This is available through the foreseeable future.

### School Year



#### QuickShop

Both online options will remain available throughout the school year. For those needing a quick item such as a snack or supply, we have developed a new system to allow students to order online, charge it to their account, and receive a notification when the items are ready for limited contact pickup.



#### Limited Capacity

Both students and visitors will be allowed to shop in-store, but we will limit the capacity to ensure that adequate space is available.

INFO & APPOINTMENTS AT [WWW.PARISH.ORG/PAWS](http://WWW.PARISH.ORG/PAWS)





## SWEEP CHAT BOX



# HOW WE WILL COME TOGETHER: BOTH CAMPUSES

- Pre-entry screening (students and employees);
- Mask/face covering for all students
  - o Students not at recess, lunch
  - o Employees not in office or alone in classroom
- Customized signage: pedestrian movement; distancing reminders; cleaning/handwashing practices;
- Multiple electrostatic cleaners (3) on each campus for use in increased cleaning protocols;
- Additional operations personnel (one on each campus);
- Partnership with testing partner: strategic guidance; efficient access to onsite and local testing





# Calendar

-



# HOW WE WILL COME TOGETHER: HILLCREST

- Elimination of PM walking carpool (reduction of parent and visitors on campus);
- Grade level cohort grouping:
  - Lunch
  - Recess (designated play areas for classes)
  - Enrichment (enrichment in homeroom)
- Use of church and outside space to distribute density
  - New outdoor structure b/w Church and E
  - Outside Youth Center
  - Outside Keith Gymnasium
  - Classes, recess, chapel, lunch
- Irradiation system and fans to purify and circulate air; handwashing stations in each building;
- Individual student supply kits: manipulatives; technology (IPADs and Chromebook 3<sup>rd</sup> and 4<sup>th</sup> grade)

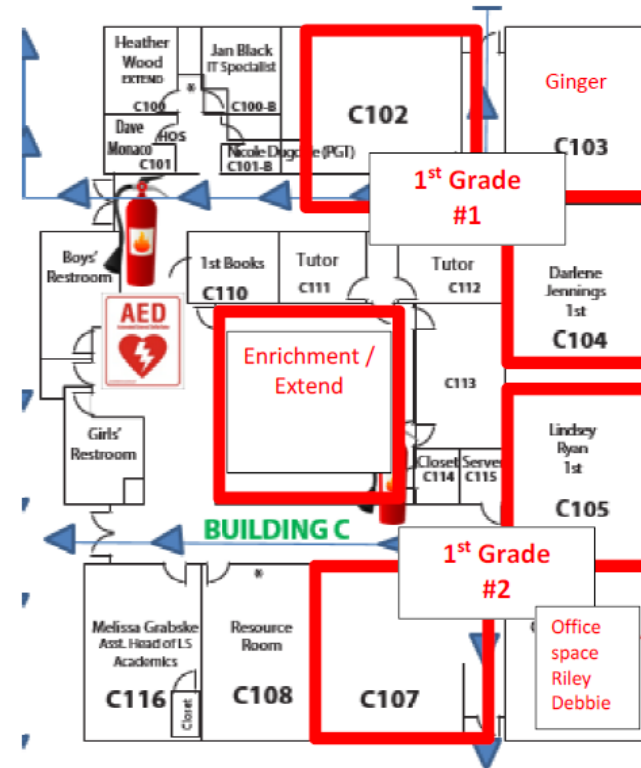
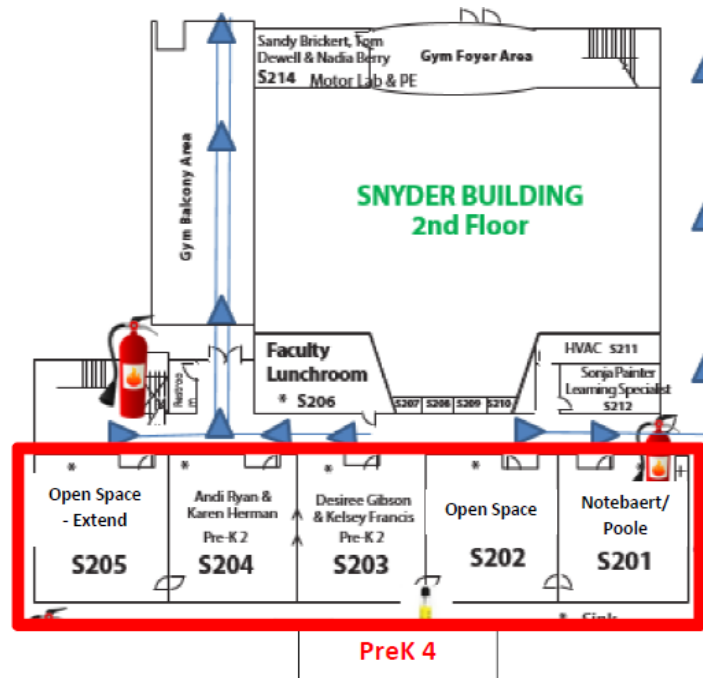




# HOW WE WILL COME TOGETHER: HILLCREST

Three PreK 4 classrooms share 2 open-space rooms

Extend will use S205 and possibly one classroom (need tables)



Double rooms are catty-corner for better teacher sight-line when class uses both spaces at once.

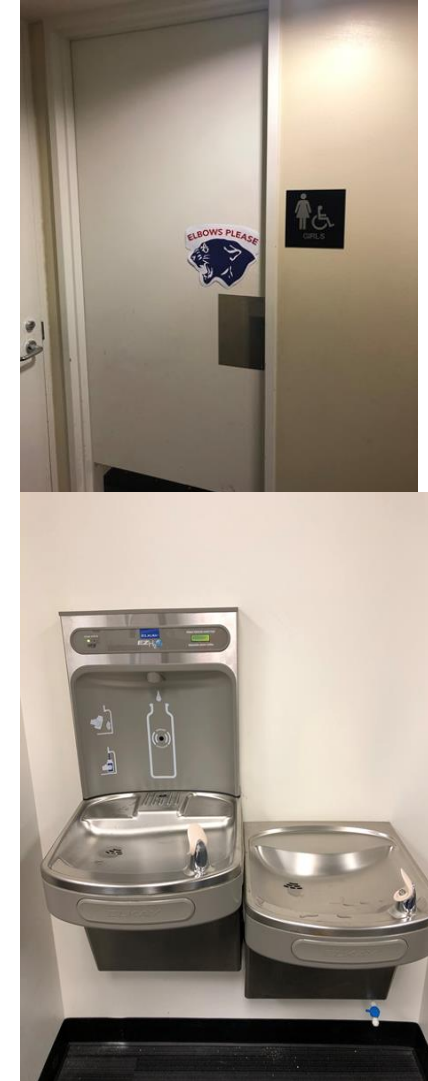
Two 1st grades move into the Youth Center – PLENTY of room for 2 classes with bathrooms!

Primer moves into the Digital Den area of Beasley STEM Center



# HOW WE WILL COME TOGETHER: MIDWAY

- Distribute density due to blended platform
  - MS and US utilize three floors of Tower & second floor of Great Hall;
  - Two classrooms for each 3rd and 4th grade homeroom;
- Removal of soft furniture in classrooms (closure of Lyon's Den Senior Lounge);
- Cleaning kits in each classroom restocked daily (Clorox wipes; bleach spray; Purell);
- Virtualize all employee meetings over 10 people





# HOW WE WILL COME TOGETHER: MIDWAY

Midway Lower School Classroom Layout 2020-2021

Red boxes indicate  
3<sup>rd</sup> and 4<sup>th</sup> grade  
advisory classrooms

Green boxes are  
classrooms that can  
remain and be used

Yellow – still have  
questions

Keena office in Great Hall  
and float in 3<sup>rd</sup> & 4<sup>th</sup>

Spanish – travel and  
possibly office in 1156

1156 is current computer  
lab

1160 could be used as office

Religion could travel or use  
chapel foyer

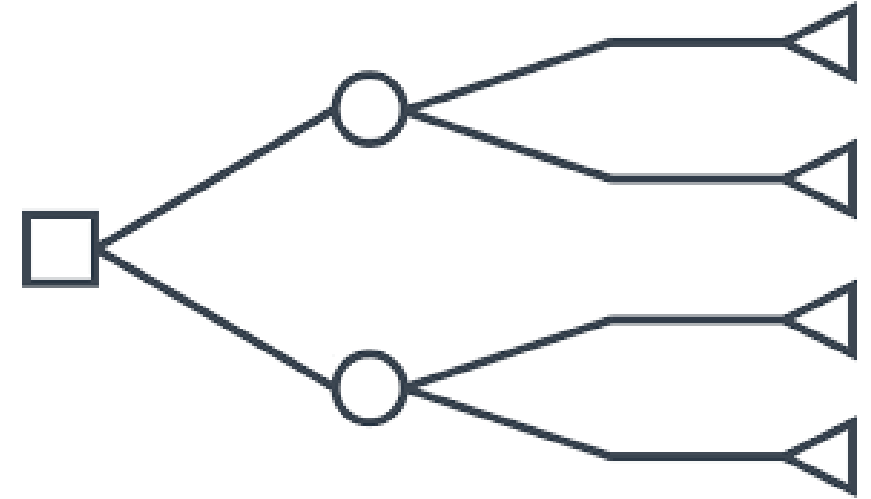
★ is a pass-through  
opening added between  
rooms





# HOW WE WILL COME TOGETHER: WHAT IF?

- Confirmed COVID-19 case among student or employee handled case by case basis:
  - Contact County Health Department
  - Tracing
  - Potential for group quarantines (e.g. Lower School class)
  - Potential temporary closures (2-14 days)
- Evaluating "reverse" instruction by impacted faculty member to teach on campus class from home





# VIDEO ORIENTATION SERIES – STARRING PETE...

- Screening protocol
- Pedestrian movement
- Hand-washing
- Mask/face covering
- Space cleaning





# BUILT TO DELIVER RESULTS



## PARISH VALUE PROPOSITION

- Weather short term turbulence:
  - Organizational culture
  - Agility
  - Leadership
  - Pandemic Finance Plan: personal assistance; credits for lunch/EXTEND
- Deliver long term results
  - Leading signature programs
  - Innovation to personalize
  - Thriving graduates
  - Vibrant community



# FINAL THOUGHTS

## Upcoming Communications

- “Together Again: Parish’s Plan for a Safe Reopening of its Campuses” (by August 1)
- Parent Town Halls (August 6, 12, 20)





# ADDITIONAL QUESTIONS