

GUIDE TO OUR DECISION MAKING AND PLANNING

PANDEMIC TASK FORCE

It is our deepest desire to return to normal campus activity, however, COVID-19 remains a serious issue, and the health and safety of our community members is our highest priority.

Since May 1, our Pandemic Task Force, comprised of more than 50 Board members, administrators, faculty and staff leaders, has evaluated COVID-19 conditions and generated plans through five, focused sub-committees for a safe reopening of our campuses:

ACADEMIC CALENDAR

- Evaluate 2020-21 model options
- Establish 20-21 pathway
- Set trigger points to adjust
- Monitor conditions
- Implement adjustments

OPERATIONS

Evaluate conditions, align operating protocols accordingly:

- Pre-screening/clearance thresholds
- Distancing
- Classrooms
- Large group venues
- Cleaning protocols
- PPE
- Communication

FINANCIAL STEWARDSHIP

- Evaluate financial models against enrollment conditions
- Prioritize levers based on true-up enrollment scenarios
- Monitor operating budget
- Steward school resources (endowment, aid, cap projects)
- Evaluate FY22 pricing & expense models

ACADEMIC PROGRAM

Learning from a Distance (LFD)

- March – May LFD autopsy
- Prioritize adjustments & adaptations
- Set training protocols
- Implement & support

COMMUNITY SUPPORT & ENGAGEMENT

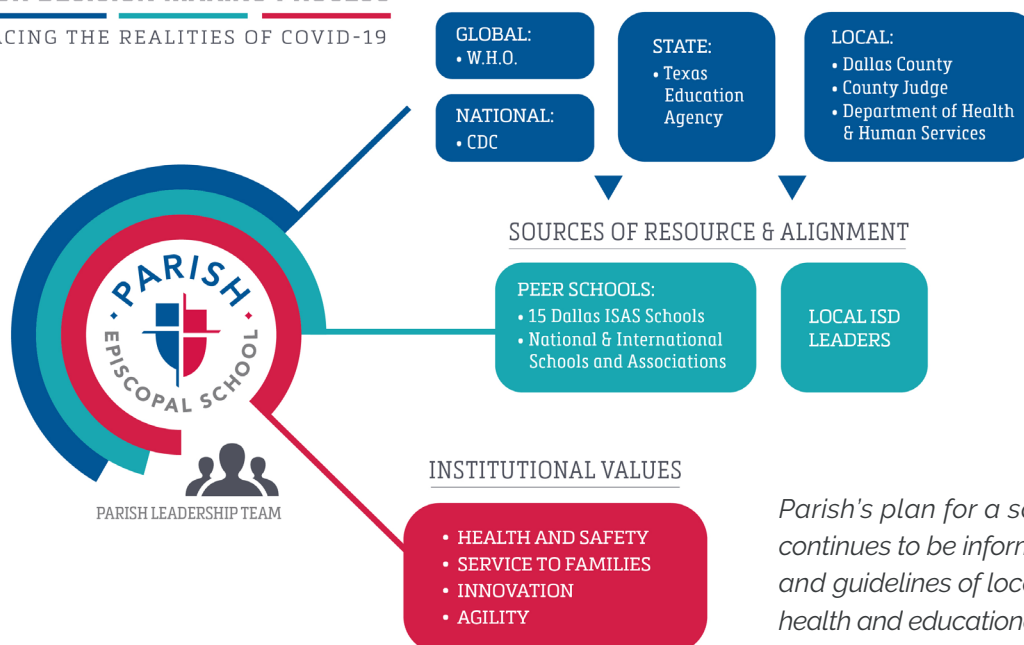
Belonging from a Distance (BFD)

- March – May BFD autopsy
- Prioritize adjustments & adaptations
- Implement system changes
- Evaluate & reframe 20-21 philanthropic priorities (Parish Fund, Senior Gift, Gala)
- Steward donors & *Limitless* pledges
- Implement crisis communication plan

The Texas Governor, Texas Department of State Health Services (DSHS) and local health authorities can order Parish and other schools to suspend on campus operation. Otherwise, the decision as to whether or not to open and how to operate resides with the Parish administration. As of July 14, 2020, the Dallas County/City health authority was granted greater discretion on school operational decisions for August, 2020.

OUR DECISION MAKING PROCESS

FACING THE REALITIES OF COVID-19



Parish's plan for a safe reopening of its campuses continues to be informed by the recommendations and guidelines of local, national and international health and educational experts.